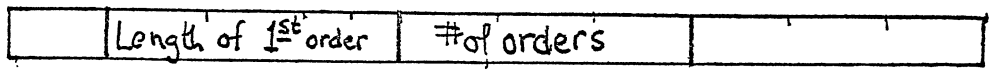


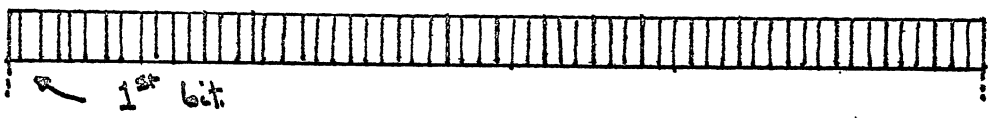
OPERATIONS

PS.MASKL



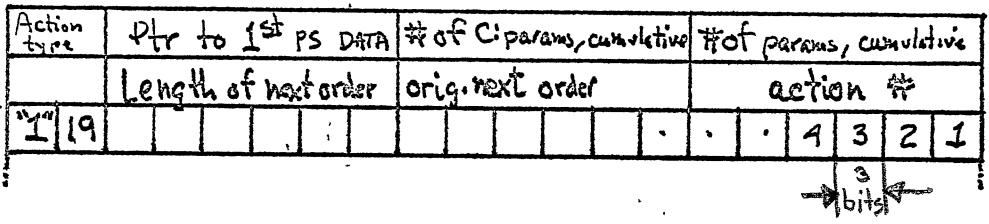
operation header word

PS.PARAML//60
Words



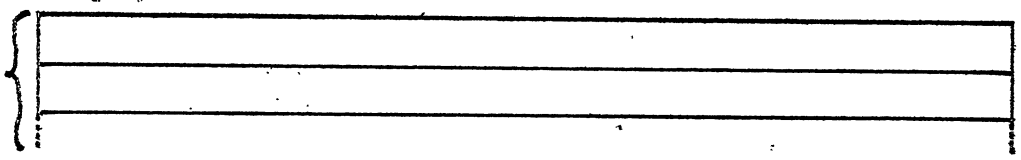
Parameter type bit mask

of params this order//20
Words



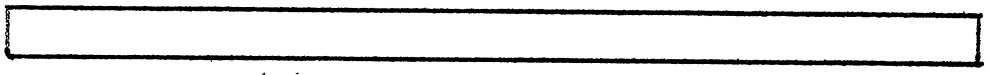
Parameter specification bytes

of PS.FDAT +
of PS.UCAP +
2 x # of PS.FCAP
Words



PS. data words

Present only for
subprocess call, jump



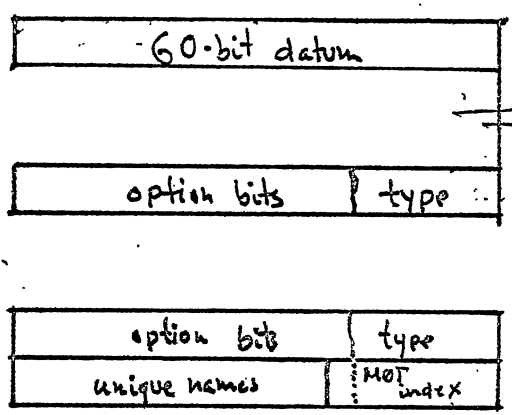
Class code

This information repeated for each order.

PS byte values

- 0 - end
- 1 - last byte this word
- 2 - PS.ANY, unspecified
- 3 - PS.UDAT, user supplied datum
- 4 - PS.FDAT, fixed datum
- 5 - PS.FCAP, fixed capability
- 6 - PS.ACAP, any capability
- 7 - PS.UCAP, user supplied capability

PS data formats



Action type - 20g = subcall, 20g = subp jump
40g = return, return parameters

"Ptr to 1st PS data" is relative to start of order.
The number of parameters are through current order
"Origin of next order" is relative to operation header word
The bits in the parameter type bit mask are:
1 = C, 0 = D.